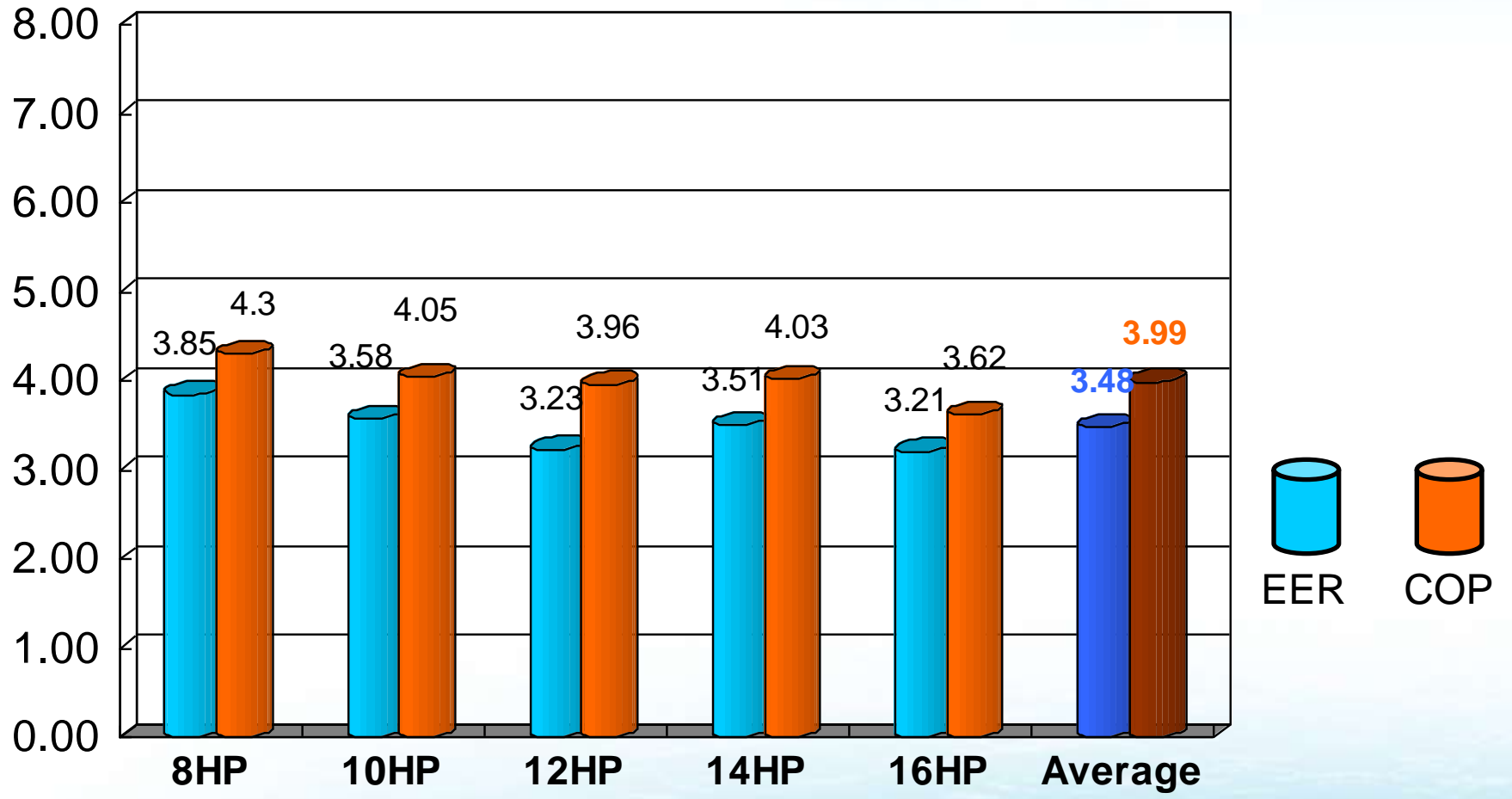


High EER and COP—More energy saving



No matter What capacity the project need

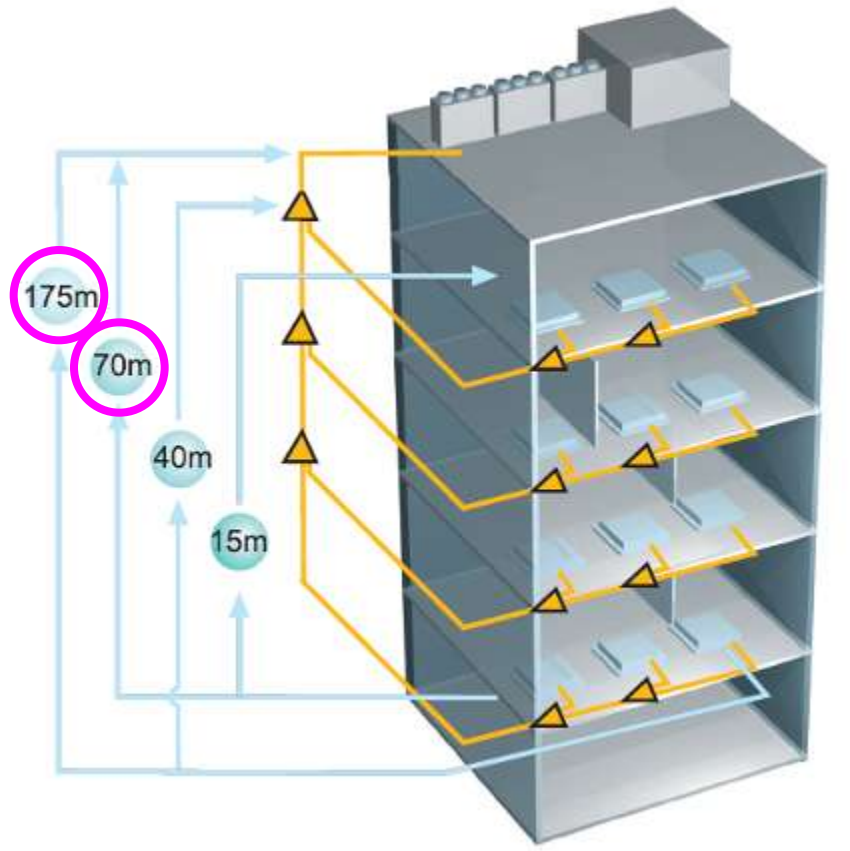
- 5 basic modules from 8 to 16HP with only 2 casing;
- Free modular combination with 2 HP capacity incensement;
- Max. 64HP of combination capacity, No.1 in the world.

No.1 capacity range in the world



No matter how big the building is

Flexible installation:



Total pipe length (single way) is up to 500m;

Farthest indoor unit: 175m ;

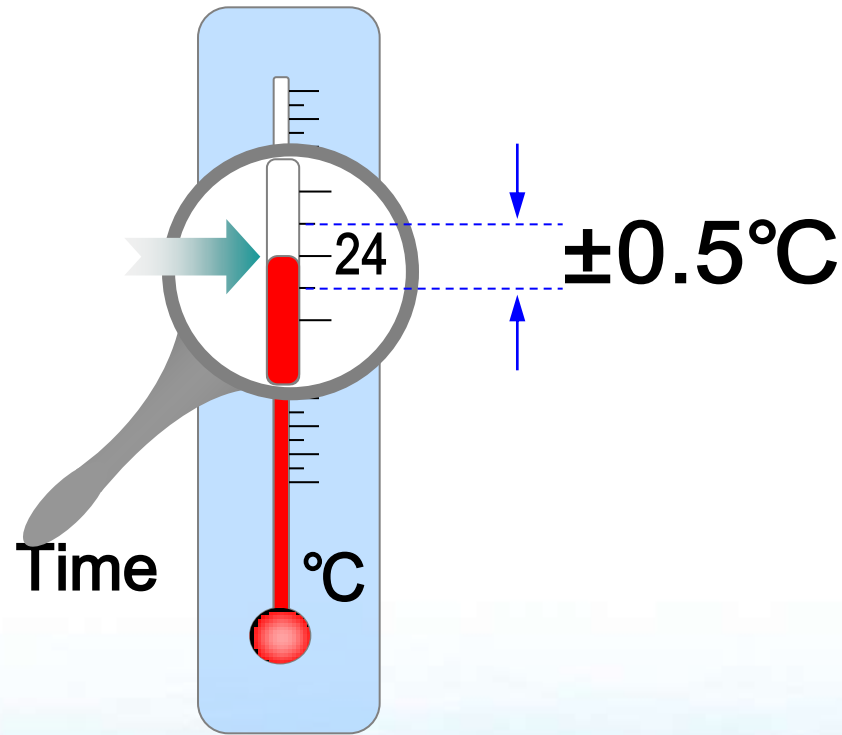
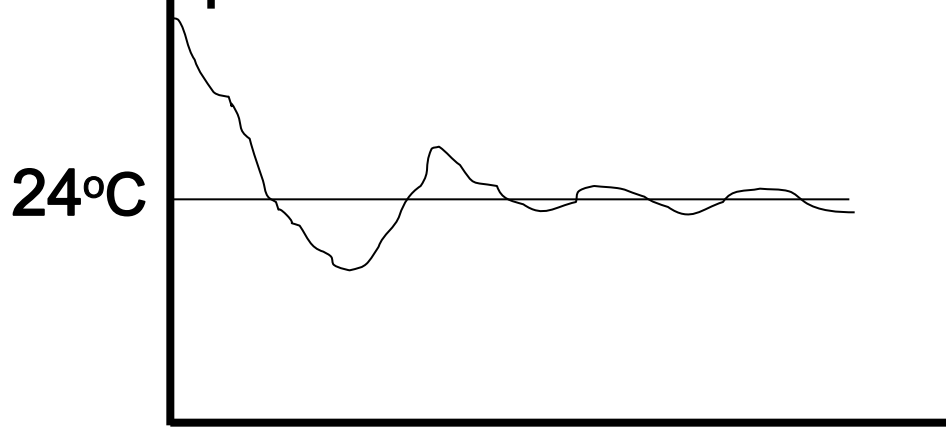
Height difference: 70m ;

Communication wire is up to 1200m

Comfortable and healthy

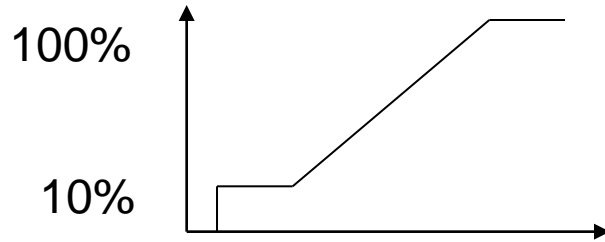
Precise room temp. control;

Room Temperature



Key technology:

➤ **Capacity output adjustment: 10%~100%** capacity output adjustment;
Compressor output



➤ **Refrigerant flow volume adjustment: Double EXV with 960 steps** adjustment in outdoor unit;

➤ **Refrigerant distribution control:**
Each indoor unit adopts **one EXV with 480 steps** adjustment



Easy and powerful control

Wireless controller :



R05/BG

➤ *R05: read the information easily in darkness with back-light display, horizontal and vertical swing function, standard for Ceiling-floor, 4-way cassette.*



R51

➤ *R51: Standard for other units.*

Easy and powerful control

Wired controller :



KJR-10B

- *Wired controller with ON/OFF/MODE SETTING/FAN SPEED/TIMER SETTING/SWING etc.;*



KJR-12B

- *Wired controller with follow me function can detect what is your requirement exactly;*



CCM04

- *Weekly schedule function, 8 segments selection per day, and 56 segments per week, most wired distance is 1200m, ;*

Easy and powerful control

Center controller and monitor:



CCM03

➤ *Indoor center controller, max. 64 indoor units control, single or all units query and control;*



CCM09

➤ *Max. 64 indoor units control, weekly schedule timer function;*

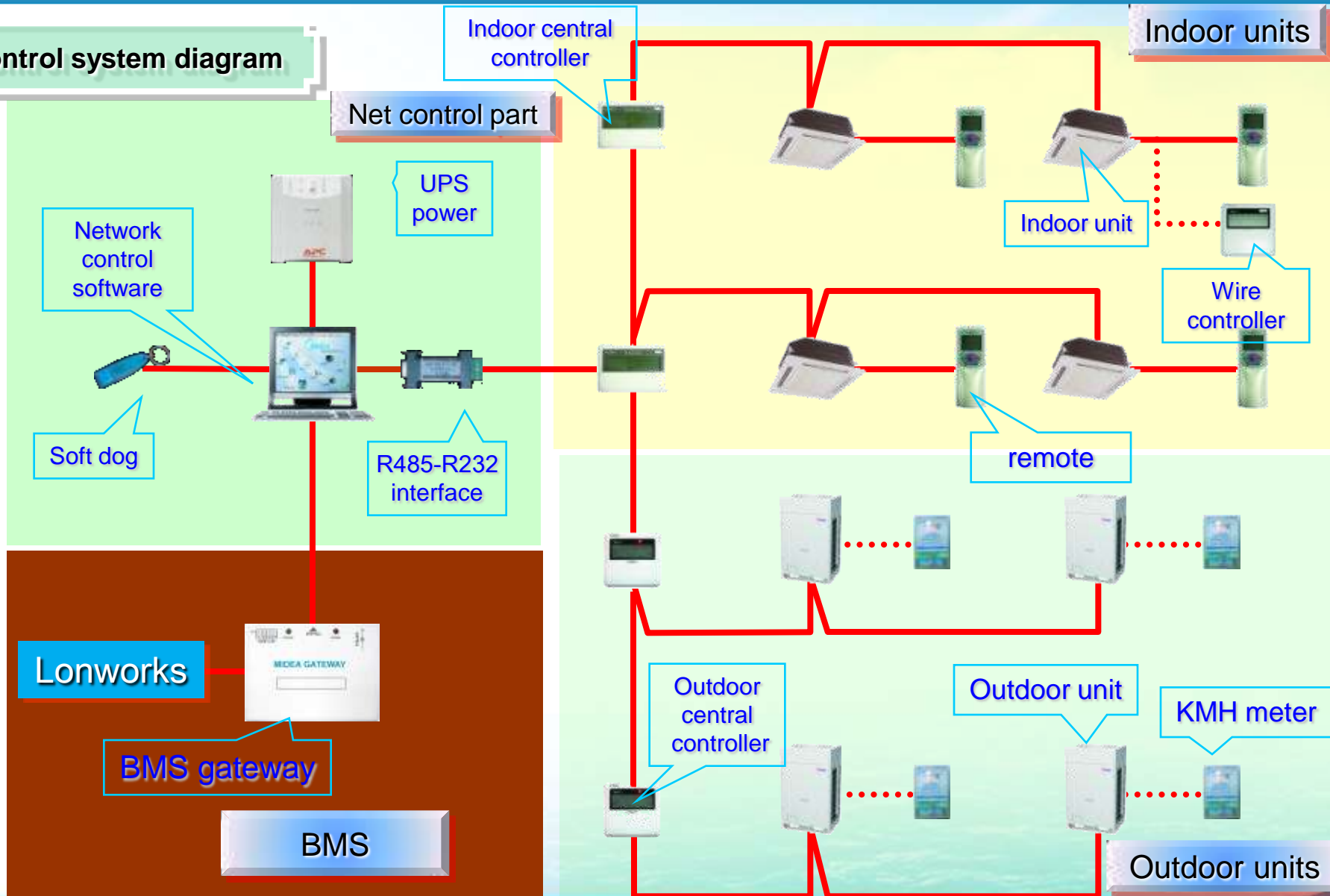


CCM02

➤ *Max. 32 outdoor units can be connected for single or all units query;*

Network control system

Control system diagram



Ceiling & Floor

R410A



3.6~14kW



- **Flexible installation: vertical or horizontal;**
- **No suspended ceiling required (Ceiling installation)**
- **Comfortable air delivery adjustment : left and right, up and down**
- **Typical application: meeting room, living room;**

Wall-mounted

R410A



2.2~5.6kW



- ***EXV is inside the indoor unit- simple installation;***
- ***Reserve control port for water pump in the PCB;***
- ***Different color for the panel;***
- ***Typical application: small office, living room...***