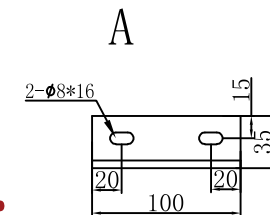
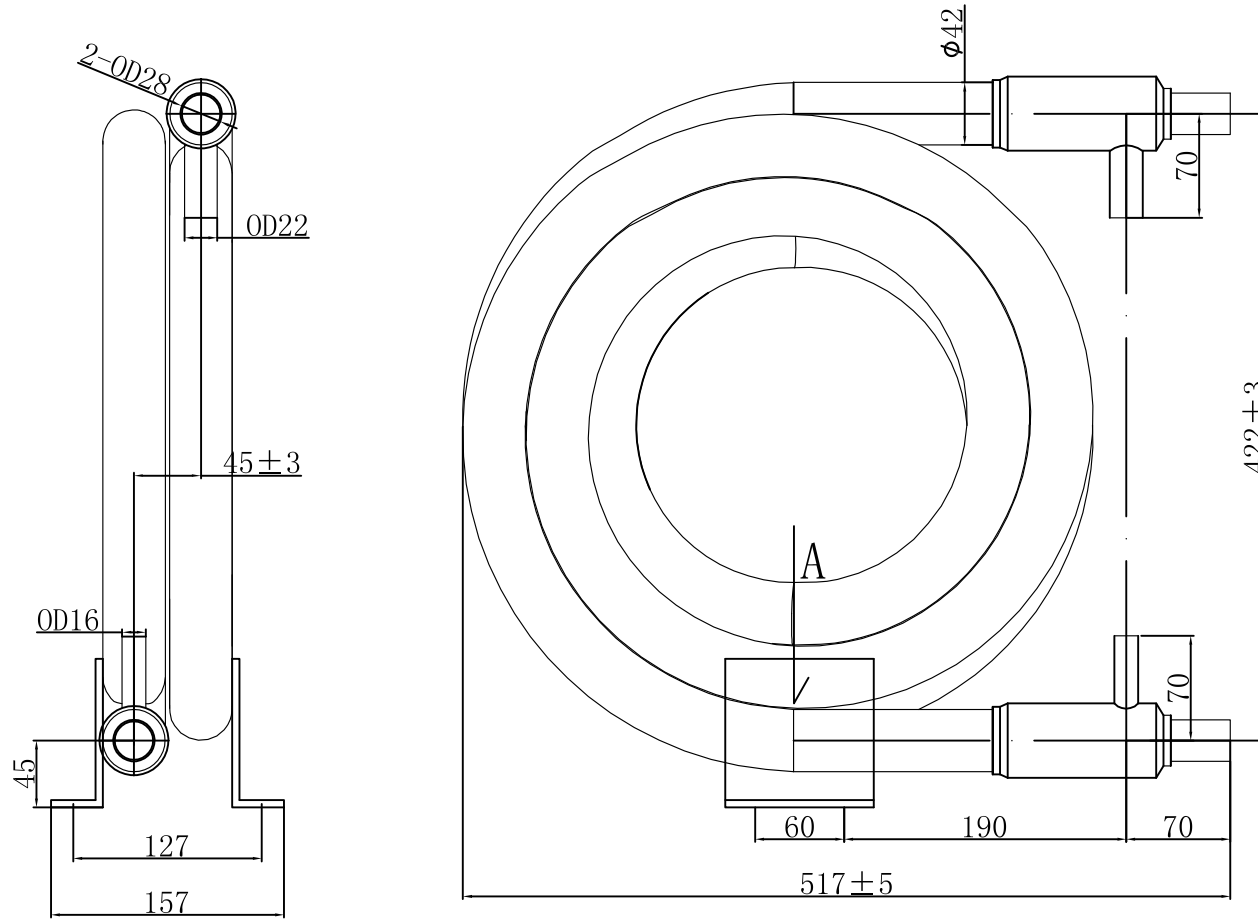


CSSW5203100



Technical specifications:

1. Inner tube and outer tube should be cleaned so that ensure the surface of the inner and outer tube to be clean without impurities;
2. All welded place should be well welded. Any defect on small holes and leaks is unacceptable.
3. Heat exchanger is black painted except 25 ±5mm cylinder from connections end.
4. Each end connection should be sealed by a plastic cap or welding.
5. Fill 0.05-0.12Mpa nitrogen gas at refrigerant side, the pressure is maintained ;
6. Any non-indicated dimensions and tolerances are subject to GB/T1804 V degree.
7. Other non-indicated requirements are subject to 《Q/HSS 001-2014》 .

ΤΕΨΕ
ΨΥΚΤΙΚΑ

ΚΩΔΙΚΟΣ ΕΙΔΟΥΣ:
04-290-5850

Design data sheet						Coaxial Heat Exchanger			
Item	Tube side	Shell side				Inner tube : Copper Outer tube: Steel			
Medium	Water	R410a				SS-0520GT-W			
Design temp °C	65	100	Mark	No.	Modify documents No.	Sign	Date	42-5170/22. 2/19/2-32	
Design pressure MPa	1.5	4.2	Design		Standard		Drawing mark	Weight	Scale
Insulation	/	/	Check		Authorize				
Customer drawing No.	/	/	Approve						
Customer Item No.	/	/	Process		Date		Total Page	Page	CSSW5203100