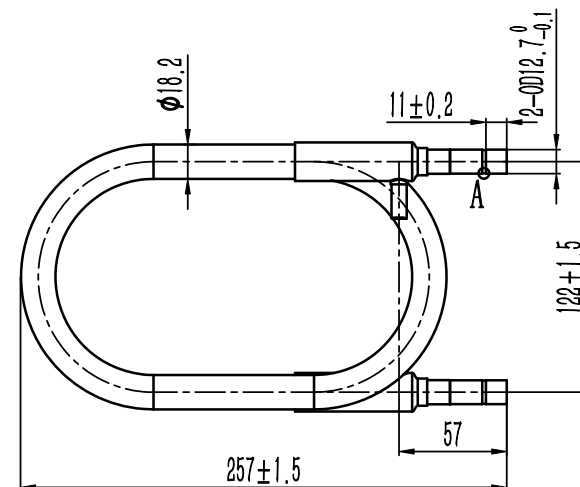
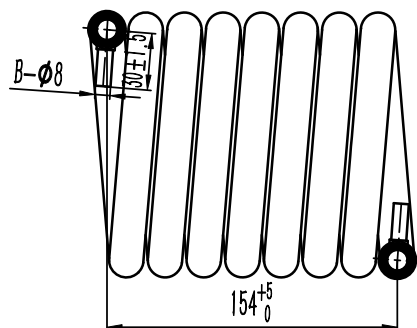
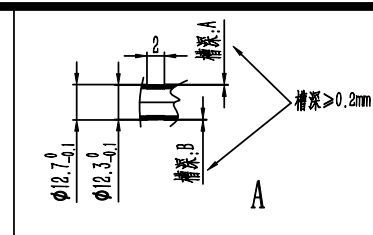


Tolerance Class	Basic Size Range (mm)							
	0.5~3	>3~6	>6~30	>30~120	>120~400	>400~1000	>1000~2000	>2000~4000
Very Coarse	-	±0.5	±1	±1.5	±2.5	±4	±6	±8



Technical Specifications

1. Inner tube and outer tube should be cleaned so that ensure the surface of the inner and outer tube to be clean without impurities,
2. All welded place should be well welded. Any defect on small holes and leaks is unacceptable,
3. Entire heat exchanger surface should not be painted but cleaned with polishing process before packing,
4. Each end connection should be sealed by a plastic cap or welding,
5. Fill 0.05-0.12Mpa nitrogen gas at refrigerant side, the pressure is maintained,
6. Any non-indicated dimensions and tolerances are subject to GB/T1804 V degree,
7. Other non-indicated requirements are subject to 《GB/T 25382-2010》.

Design Data Sheet								Coaxial Heat Exchanger		
Item	Tube Side	Shell Side						Inner tube: SUS316L		
Medium	Water	Water						Outer tube: SUS304		
Design Temp/°C	100	100	Mark	No.	Modify Documents No.	Sign	Date	Drawing Mark	Weight	Scale
Design Pressure/MPa	1.5	1.5	Design			Standard				1:4
Insulation	\		Check			Authorize				
Customer Drawing No.	\		Approve							
Customer Item No.	\		Process			Date		Total Page	Page	

TEΨE

ΨΥΚΤΙΚΑ

**ΚΩΔΙΚΟΣ ΕΙΔΟΥΣ:
04-290-3810**

SS-0100BB-U

CSS01000284